

E9141  
First Edition  
April 2014

**Copyright© 2014 ASUSTeK COMPUTER INC. All Rights Reserved.**

No part of this manual, including the products and software described in it, may be reproduced, transmitted, transcribed, stored in a retrieval system, or translated into any language in any form or by any means, except documentation kept by the purchaser for backup purposes, without the express written permission of ASUSTeK COMPUTER INC. ("ASUS").

Product warranty or service will not be extended if: (1) the product is repaired, modified or altered, unless such repair, modification or alteration is authorized in writing by ASUS; or (2) the serial number of the product is defaced or missing.

ASUS PROVIDES THIS MANUAL "AS IS" WITHOUT WARRANTY OF ANY KIND, EITHER EXPRESS OR IMPLIED, INCLUDING BUT NOT LIMITED TO THE IMPLIED WARRANTIES OR CONDITIONS OF MERCHANTABILITY OR FITNESS FOR A PARTICULAR PURPOSE. IN NO EVENT SHALL ASUS, ITS DIRECTORS, OFFICERS, EMPLOYEES OR AGENTS BE LIABLE FOR ANY INDIRECT, SPECIAL, INCIDENTAL, OR CONSEQUENTIAL DAMAGES (INCLUDING DAMAGES FOR LOSS OF PROFITS, LOSS OF BUSINESS, LOSS OF USE OR DATA, INTERRUPTION OF BUSINESS AND THE LIKE), EVEN IF ASUS HAS BEEN ADVISED OF THE POSSIBILITY OF SUCH DAMAGES ARISING FROM ANY DEFECT OR ERROR IN THIS MANUAL OR PRODUCT.

SPECIFICATIONS AND INFORMATION CONTAINED IN THIS MANUAL ARE FURNISHED FOR INFORMATIONAL USE ONLY, AND ARE SUBJECT TO CHANGE AT ANY TIME WITHOUT NOTICE, AND SHOULD NOT BE CONSTRUED AS A COMMITMENT BY ASUS. ASUS ASSUMES NO RESPONSIBILITY OR LIABILITY FOR ANY ERRORS OR INACCURACIES THAT MAY APPEAR IN THIS MANUAL, INCLUDING THE PRODUCTS AND SOFTWARE DESCRIBED IN IT.

Products and corporate names appearing in this manual may or may not be registered trademarks or copyrights of their respective companies, and are used only for identification or explanation and to the owners' benefit, without intent to infringe.

# Contents

<b>Dual Intelligent Processors 5</b> .....	<b>4</b>
5-Way Optimization.....	4
TPU (Turbo Processing Unit).....	4
EPU (Energy Processing Unit).....	7
DIGI+ Power Control.....	8
Fan Xpert 3.....	10
Turbo App.....	12
<b>Wi-Fi GO! Card</b> .....	<b>13</b>
ASUS Wi-Fi GO! card specifications.....	13
Installation.....	14
<b>Wi-Fi Engine</b> .....	<b>15</b>
<b>Wi-Fi GO! and Remote GO!</b> .....	<b>17</b>
System requirements.....	17
ASUS Account Login.....	17
Using Wi-Fi GO!.....	19
Cloud GO!.....	22
Remote Desktop.....	23
File Transfer.....	25
Remote Keyboard & Mouse.....	26
<b>ASUS Media Streamer</b> .....	<b>26</b>
System requirements.....	26
<b>RF Equipment Notices</b> .....	<b>28</b>

## Conventions used in this guide

To ensure that you perform certain tasks properly, take note of the following symbols used throughout this manual.



**DANGER/WARNING:** Information to prevent injury to yourself when trying to complete a task.



**CAUTION:** Information to prevent damage to the components when trying to complete a task.



**IMPORTANT:** Instructions that you **MUST** follow to complete a task.



**NOTE:** Tips and additional information to help you complete a task.

# Dual Intelligent Processors 5

ASUS Dual Intelligent Processors 5 combines TPU, EPU, DIGI+ Power Control, Fan Xpert 3, and Turbo App functions to push the system's performance to its optimal potential. It automatically balances the system's performance, power saving, levels, and fan settings via the user-friendly AI Suite 3 utility.

## 5-Way Optimization

The 5-Way Optimization function dynamically optimizes your PC based on real-time usage to provide the best system status. It covers the essential areas such as CPU performance, energy saving, stable digital power, cool and quiet fan control, and includes tailored settings for your apps to ensure your PC is ready for gaming, entertainment, productivity, or just about anything.

### 5-Way Optimization screen



DO NOT remove your fan during the tuning process.

## TPU (Turbo Processing Unit)

TPU allows you to manually adjust the CPU frequency, core ratio, DRAM frequency, and related voltages for enhanced system stability and performance boost.



Refer to the CPU documentation before adjusting CPU voltage settings. Setting a high voltage may damage the CPU permanently and setting a low voltage may lead to an unstable system.



For system stability, the TPU settings are not saved in the BIOS and are not loaded during system bootup. Save your overclocking settings as a TPU profile and manually load this profile after system bootup.

## Using TPU

### CPU Frequency

Click or tap ◀ or ▶ to adjust the Base Clock Frequency, CPU Ratio, and CPU Cache Ratio

Click or tap ◀ or ▶ to select the number of cores to adjust

Tick to enable Group Tuning



Scroll down then adjust the CPU voltages and DRAM voltages

Click or tap to load the saved profile

Click or tap to save the adjustment into a profile

Click to load the default values

Click or tap to apply the adjustments

Click or tap to undo the adjustments



- Set the CPU Core Ratio item in BIOS to **[Auto]** before using the CPU Frequency in TPU. Refer to section **Ai Tweaker menu** in the BIOS chapter of your motherboard user manual for details.
- The CPU Frequency bars show the status of the CPU cores, which vary with your CPU model.

### Voltage

CPU Core Voltage adjustments

CPU Cache Voltage adjustments



Click to load the saved profile

Click to save the adjustment into a profile

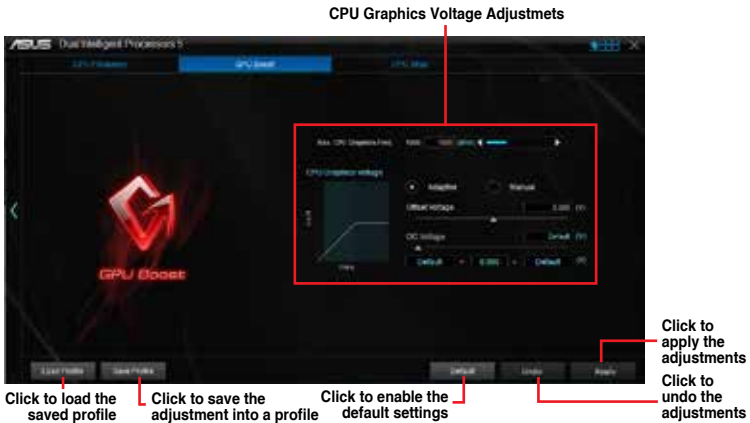
Click to undo the adjustments

Click to load the default values

Drag the slider to adjust DRAM, CPU Analog I/O, PCH, and CPU Input voltages

Drag the slider to adjust CPU System Agent, CPU Digital I/O, VTTDDR, and PCHVLX voltages

## GPU Boost



## CPU Strap

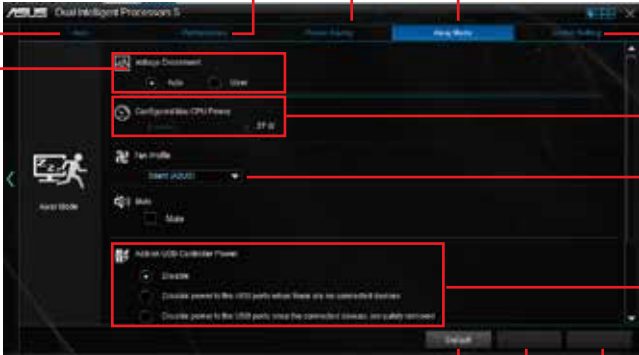


- The overclocking result varies with the CPU model and the system configuration.
- We recommend that you set up a better thermal environment to prevent overheating from damaging the motherboard.

# EPU (Energy Processing Unit)

EPU is a real-time system power-saving chip that automatically detects the current system load and intelligently moderates power usage. It offers a total system-wide energy optimization, reduces fan noise, and extends the lifespan of your hardware components.

## Using EPU



The screenshot shows the EPU settings window with the following callouts:

- Click to configure the settings in Auto mode
- Click to configure the settings in Max Power Saving mode
- Click to configure the settings in High Performance mode
- Click to configure the settings in Away mode
- Click to configure the Global settings
- Click ◀ or ▶ to adjust the configured Max CPU Power
- Click ▼ to select a fan profile
- Tick to select a setting for Add-on USB ports power
- Tick to select a setting for Voltage Decrement
- Click to enable the default settings
- Click to undo the adjustments
- Click to apply the adjustments



- When you enable Configured Max CPU Power for advanced energy saving condition, the CPU frequency may display 800 MHz in the Windows® OS information of your computer. However, the true CPU frequency varies depending on the wattage that you manually set. You can adjust the CPU wattage from the lowest base on your preferred default value.
- Configured Max CPU Power may decrease the total power delivery to the CPU and affects the CPU performance under system heavy load. To restore your system to its default settings, reboot your computer.

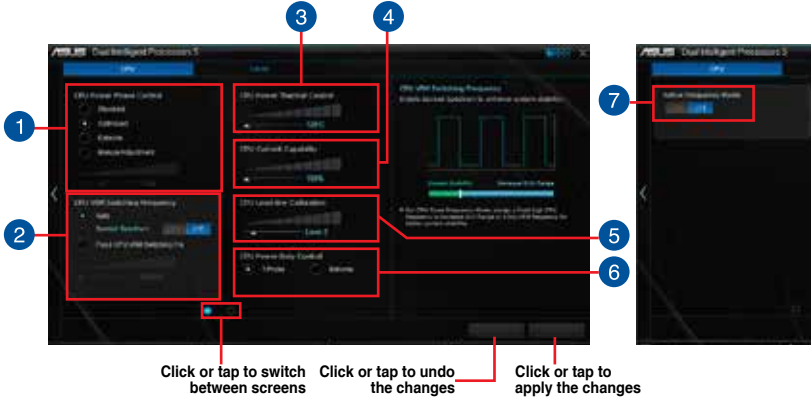
# DIGI+ Power Control

ASUS DIGI+ Power Control features the revolutionary and innovative digital VRM and DRAM Voltage controllers. These controllers offers ultra-precise memory and voltage tuning for optimal system efficiency, stability and performance.



The following screens are for reference only. Configuration options varies depending on the motherboard model.

## Adjusting the CPU Power



- 1 CPU Power Phase Control**  
Increase the phase number under a heavy system load to get more transient and better thermal performance. Reduce the phase number under a light system load to increase the VRM efficiency.
- 2 CPU VRM Switching Frequency**  
Enables spread spectrum to enhance system stability.
- 3 CPU Power Thermal Control**  
A higher temperature brings a wider CPU power thermal range and extends the overclocking tolerance to enlarge the overclocking potential.
- 4 CPU Current Capability**  
CPU Current Capability provides a wider total power range for overclocking. A higher value brings a wider total power range and extends the overclocking frequency range simultaneously.
- 5 CPU Load-line Calibration**  
It allows you to adjust the voltage range to control the CPU Load-line. Adjust to a high value for system performance or to a low value for power efficiency.
- 6 CPU Power Duty Control**  
CPU Power Duty Control adjusts the current of every VRM phase and the thermal conditions of every phase component.
- 7 Active Frequency Mode**  
Active Frequency Mode allows you to enhance the power saving condition of the CPU. Click **ON** to get a quicker transient response while saving the CPU power.



## Adjusting the DRAM Power



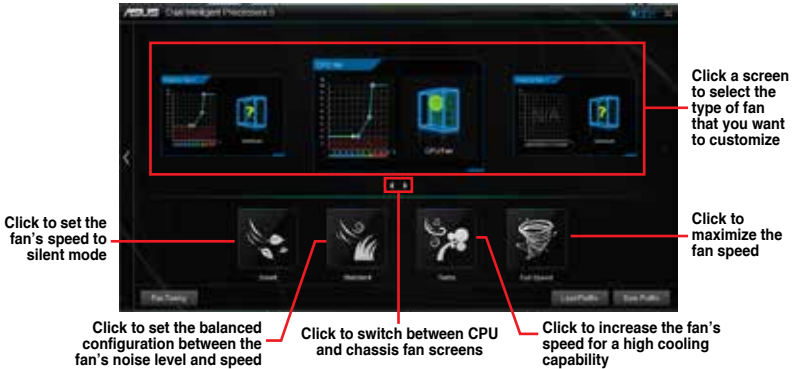
- 1 DRAM Voltage Frequency**  
Allows you to adjust the DRAM switching frequency to stabilize the system or to increase the overclocking range.
- 2 DRAM Current Capability**  
A higher value brings a wider total power range and extends the overclocking frequency range simultaneously.
- 3 DRAM Power Phase Control**  
Select **Extreme** for full phase mode to increase system performance or select **Optimized** for ASUS optimized phase tuning profile to increase the DRAM power efficiency.



- The actual performance boost may vary depending on your CPU specification.
- Ensure that the cooling modules are properly installed in your motherboard to monitor the thermal conditions.

# Fan Xpert 3

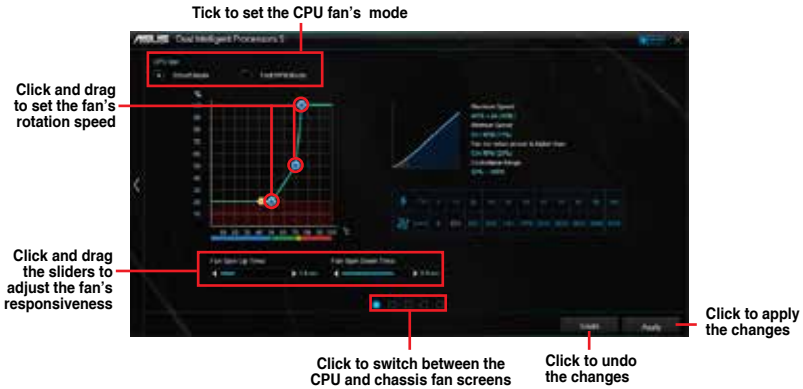
ASUS Fan Xpert 3 provides customizable settings of your fans for a cooler and quieter computing environment. With its fan Auto Tuning feature, ASUS Fan Xpert 3 automatically tweaks the settings of CPU and chassis fans to achieve their best cooling performance. ASUS Fan Xpert 3 also supports hardware level PWM/DC combo mode for the CPU and chassis fans. You can also reduce the CPU fan speed below the default minimum for a noiseless operation during light loads.



## Customizing the fan settings

### Smart Mode

Smart Mode allows you to customize the fans' rotation speeds and responsiveness based on your system's temperature.



The Extreme Quiet Mode allows you to configure the CPU fan speed control range to its extreme low setting when using a PWM CPU fan.

## RPM Mode

RPM Mode allows you to set the fan speed when the CPU temperature is below 75°C.



Click and drag to adjust the fan's speed

Click to switch between the CPU and chassis fan screens



- When the CPU temperature reaches 75° C, the fan will automatically run at full speed to protect the CPU.
- The Fan Xpert 3 may not be able to detect the fan speed if your fan is installed with an external control kit for rotation speed.
- Fan Xpert 3 does not support 2-pin fans. If you install a 2-pin fan, it can only run at its full speed.
- If the CPU or chassis fans have been changed, the Fan Auto Tuning process should be repeated.



DO NOT remove your fan during the Fan Auto Tuning process.

Tick to set the Chassis fan's mode

Click and drag to set the fan's rotation speed

Click and drag the sliders to adjust the fan's responsiveness

Click to switch between the CPU and chassis fan screens

Click to select a different thermal sensor onboard for chassis fan's speed control

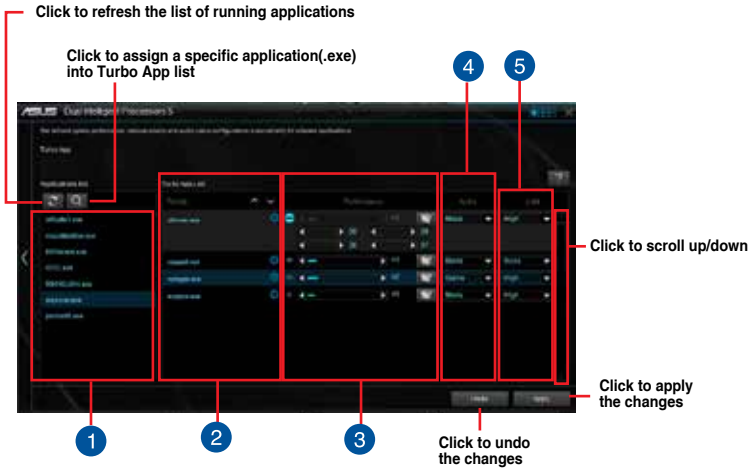
Click to undo the changes

Click to apply the changes

# Turbo App

Turbo App allows you customize the system performance, network priority, and audio setting of an application.

When an application is on the Turbo App List, you can allocate the CPU frequency, assign a network priority, and define the audio setting of the selected application.



- 1 Applications list pane**  
Displays all the running applications on your system.
- 2 Turbo App List pane**  
Displays the applications added to the Turbo App List.
- \* Only applications on the Turbo App List can be configured.**
- 3 Performance pane**  
Allows you to assign the CPU performance to a selected application.
- 4 Audio pane**  
Allows you to manually assign a preset audio configuration to a selected application.
- 5 LAN pane**  
Allows you assign the network priority to a selected application.

# Wi-Fi GO! Card

The Wi-Fi GO! card is an easy-to-use wireless LAN adapter that allows you to connect to a wireless LAN in a single network. With the Wi-Fi GO! card, you can also use your system as an access point for other Wi-Fi supported devices.

By default, the Wi-Fi GO! card is already installed on your motherboard. To locate the Wi-Fi GO! card, refer to section **Motherboard rear and audio connections** of your motherboard's user guide.



The Wi-Fi standard of 802.11ac will be restricted by countries' regulations. Wi-Fi 802.11ac feature will be supported under the complete 11ac eco-system environment.

## ASUS Wi-Fi GO! card specifications

Bluetooth v4.0 Wi-Fi 802.11 a/b/g/n/ac version

<b>Wi-Fi Standard</b>	IEEE 802.11 a/b/g/n/ac
<b>Bluetooth standard</b>	Bluetooth v4.0
<b>Data rate</b>	802.11ac (HT80*) up to 867Mbps, 802.11n(HT40*) up to 300Mbps, 802.11n(HT20) up to 150Mbps, 802.11a up to 54Mbps, 802.11b up to 11Mbps, 802.11g up to 54Mbps * <b>When using Wi-Fi Engine in AP mode, the channel bandwidth is limited to HT20 and with a maximum data rate of 150 Mbps due to Windows® limitation.</b>
<b>Security</b>	WEP, WPA & WPA2* * <b>Use WPA2 or open system to reach 65Mbps and above.</b>
<b>Network architecture types</b>	AP Mode Client mode
<b>Frequency band</b>	2.4GHz & 5GHz ISM radio band
<b>Operating range</b>	<b>Wi-Fi:*</b> Outdoor up to 300 meters Indoor up to 100 meters * <b>The transmission speed may vary according to the environment</b> <b>Bluetooth:</b> 10 - 20 meters (depends on the environment)
<b>Antenna</b>	Antenna 1: Wi-Fi Tx/Rx Antenna 2: Wi-Fi Tx/Rx + Bluetooth 1 x ASUS 2T2R dual band Wi-Fi moving antenna (with SMA connector)
<b>LED</b>	<b>Wi-Fi:</b> Green LED: Wi-Fi enabled LED off: Wi-Fi disabled <b>Bluetooth:</b> Blue LED: Bluetooth enabled LED off: Bluetooth disabled Blinking blue LED: Data activity
<b>Support OS</b>	32-bit / 64-bit Windows® 7, 32-bit / 64-bit Windows® 8 / 8.1
<b>ASUS special features</b>	ASUS Wi-Fi Engine ASUS Wi-Fi GO!

\* The specifications are subject to change without notice.

## Installation

### System requirements

To use the Wi-Fi GO! card, ensure that your system meets the following requirements:

1. 32-bit / 64-bit Windows® 7, 32-bit / 64-bit Windows® 8 / 8.1
2. DVD Optical drive
3. ASUS support DVD containing the Wi-Fi GO! card driver
4. ASUS AI Suite 3 utility



- Ensure to install the bundled Wi-Fi antenna connector to the Wi-Fi GO! card ports.
- To install ASUS AI Suite 3 utility, refer to the section **AI Suite 3** of your motherboard's user guide for more details.

### Installing Wi-Fi GO! card driver



The contents of the support DVD are subject to change without notice. Visit the ASUS support site at <http://support.asus.com> for driver or utilities updates.


To install Wi-Fi GO! card driver:

1. Place the support DVD on the optical drive. If Autorun is enabled in your computer, the DVD automatically displays the installation wizard.
2. Click **Drivers** tab then click **ASUS Bluetooth 4.0 Wi-Fi Driver**.
3. Follow the onscreen instructions to complete the installation.
4. After the installation is completed, restart your computer.



## Wi-Fi Engine

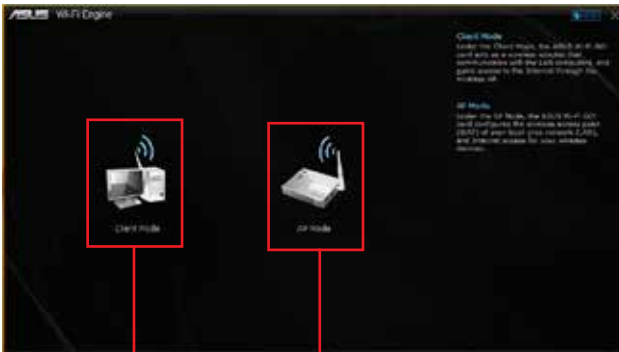
Wi-Fi Engine allows you to connect to a wireless network and set up your computer as an access point for Internet connection sharing among Wi-Fi enabled devices.

To use Wi-Fi Engine, click or tap  on the right edge of the AI Suite 3 main menu, then select **Wi-Fi Engine**.



Wi-Fi Engine is available only in selected motherboard models.

### Using Wi-Fi Engine



Click or tap to set up your computer as a wireless access point

Click or tap to connect to a wireless access point

### Using the Client Mode

The Client mode allows you to connect your system to a wireless network.

To use the client mode:

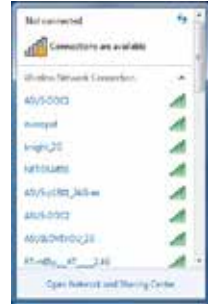
1. Click or tap **Client Mode** to launch Network Connections.
2. From the Network Connections window, select a network adapter.



- From the list of available networks, select a network that you want to connect to.



Some networks may require you to key in a password.



### Using the AP Mode

The AP mode allows you to set your system as an access point for other wireless-enabled devices.

To use AP mode, click or tap **AP Mode** on the Wi-Fi Engine menu.

Click or tap to go back to previous screen

Click or tap to select a network

Key in a network name

Key in your password

Key in your password for confirmation

Click or tap to disable AP mode

Click or tap to enable AP mode



- In the AP mode, the Internet Connection Sharing may depend on the Bluetooth/Internet device's driver support.
- Due to Windows® 8 limitation, it may take several minutes to set up the AP mode for the first time.
- Due to the restriction of Windows OS SoftAP feature, the AP mode only supports 2.4 GHz bandwidth with 802.11n communication standard.



## Wi-Fi GO! and Remote GO!

Wi-Fi GO! and Remote GO! are ASUS exclusive utilities that gives you complete control of your PC anytime and anywhere with your smart devices. You can manage all your public clouds or sync and backup files among your PC and devices.



The user interface of your smart device may vary with the operating system and the screen resolution.

## System requirements

System requirements	PC	Smart device
OS	Windows® 7/Windows® 8/ Windows® 8.1	Android 4.0 or higher versions iOS7 or later versions
Utilities	ASUS HomeCloud	ASUS Wi-Fi GO! & NFC Remote



- For Android devices, download the ASUS Wi-Fi GO! & NFC Remote from Google Play. For iOS devices, download it from App Store.
- Install the Wi-Fi GO! card driver and ASUS HomeCloud utility from the support DVD bundled with your ASUS motherboard or visit [www.asus.com](http://www.asus.com).
- If you upgrade from Windows® 8 to Windows® 8.1, ensure to reinstall the Wi-Fi GO! card driver to fully utilize the Wi-Fi GO! functions.

## Smart device supported screen resolutions


Wi-Fi GO! & NFC Remote supports the following screen resolutions of smart devices:

Screen type	Low density (120 ldpi)	Medium density (160 mdpi)	High density (240 hdpi)	Extra high density (320 xhdpi)
Screen Resolution	1024 x 600	WXGA (1280 x 800)	1536 x 1152	2048 x 1536
		1024 x 768	1920 x 1152	2560 x 1536
		1280 x 768	1920 x 1200	2560 x 1600

## ASUS Account Login

Wi-Fi GO! gives you complete control of your PC anytime and anywhere. Create and login the same ASUS Account on your PC and smart devices for public-to-private network functions.



- Remote Desktop and File Transfer support public-to-private networks feature.
- You can access the ASUS Account tab by clicking  from Wi-Fi GO! main page.

## Creating an ASUS account



Ensure that you have an internet connection before you create an account.

To create a new ASUS Account:

1. Click or tap **Create a New Account** on your PC or smart device.  
The browser will direct you to the ASUS website (www.asus.com).
2. From the ASUS website, click or tap **Sign Up** then follow onscreen instructions to complete the registration.

## Logging in

To log-in using your PC:

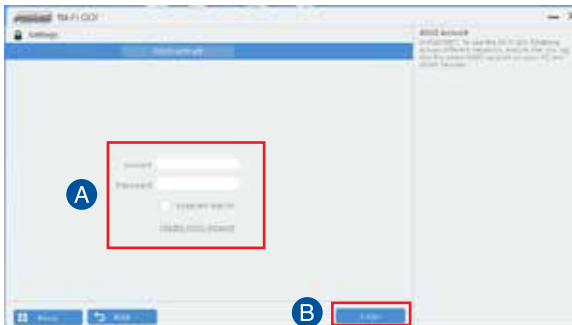
1. Launch Wi-Fi GO! on your PC.



A login notice is displayed when you launch Wi-Fi GO! for the first time on your PC. To stop this notice from appearing again, tick **Don't remind me again** then click **Go to Login**.

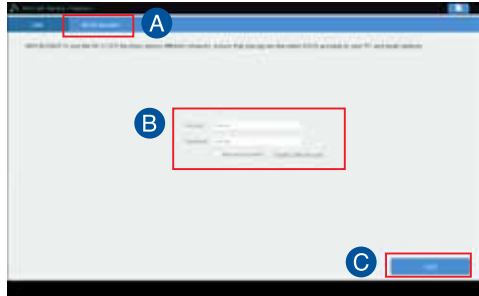


2. From the log-in window, key in your ASUS account and password (A) then click **Login** (B).



To log-in using your smart device:

1. Launch **Wi-Fi GO! & NFC Remote** on you smart device.
2. Tap **ASUS Account (A)**, key in your ASUS Account and password, then click or tap Login (C).



- PCs with the same ASUS account logged in will show up in the device list.
- The public-to-private network functions for the iOS system will be available from **Wi-Fi GO! & NFC Remote V2.00.00** or later versions.

## Using Wi-Fi GO!

To launch **Wi-Fi GO!**, click the **ASUS HomeCloud** shortcut on your desktop, then select **Wi-Fi GO!** from the mini bar.


Click to set a password or log in using your ASUS Account



Wi-Fi GO! menu

Use your smart device to scan QR Codes for more information



To protect your Wi-Fi utility from unauthorized remote access, click  then set a password.




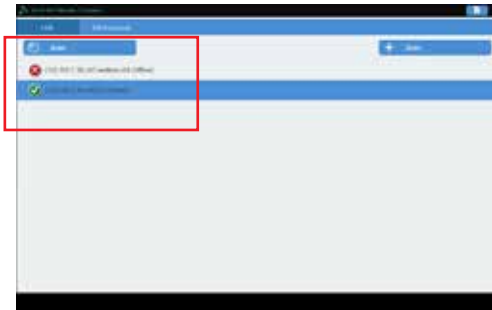
Launch **Wi-Fi GO! & NFC Remote** on your smart device to use the **Wi-Fi GO! & NFC** remote control functions. For more details, refer to section **Wi-Fi GO! & NFC Remote** of this user manual for more details.

## Wi-Fi GO! & NFC Remote (App for smart devices)

### Using Wi-Fi GO! & NFC Remote

To use the Wi-Fi GO! & NFC Remote:

1. Connect your smart device to the same Wi-Fi network as your computer or log in on your computer and smart devices using the same ASUS account to fully utilize the Wi-Fi GO! functions across different networks.
2. On your smart device, tap  then tap **Enter**.
3. From the list of scanned PCs, tap the computer that you want to connect with your smart device.



### Wi-Fi GO! & NFC Remote interface main page



The screenshots are for reference only and vary with the type of smart device.

## Using the Wake-on-LAN

If you want to wake up your computer using the smart device, ensure that you enable the computer's Wake-on-LAN settings.

To configure your computer's Wake-on-LAN settings:

1. From BIOS Setup, go to **Advanced > APM Configuration** then set **Power On By PCI-E/PCI** to **[Enabled]**.
2. From Windows® OS, do the following:
  - a. On your desktop, click **Start**, right-click **Computer > Manage** to launch the Computer Management screen.
  - b. Click **Device Manager** to view all the installed devices.
  - c. Click **Network Adapters**, right-click the installed module card (Broadcom or Atheros) then click **Properties > Power Management** tab.
  - d. Tick these items **Allow this device to wake up the computer** and **Only allow a magic packet to wake the computer**.



---

For 802.11ac standard Wi-Fi GO! Card, the Wake-on-LAN function will be supported in the later version for Windows® 8 operating system.

---

# Cloud GO!

Cloud GO! allows you to control and synchronize your files across multiple cloud services such as ASUS WebStorage, Dropbox®, Google Drive™, and SkyDrive®.



- Ensure to set the correct system date and time of your computer and smart device when using Cloud GO!
- Due to the cloud storage limitation, you can only upload or synchronize files with a maximum size of 100 MB.
- The synchronized files will be saved under the Wi-Fi GO! folder of each cloud storage. For the backed up files, you can find them in C://MyFavorites folder.
- Log into the cloud storages accounts first in your PC and stay signed in to allow smart device control.

To use Cloud GO!:

1. Click or tap **Cloud GO!**.
2. Log in to your cloud account then click or tap **Sign In**.



To log in to your Google Drive, Dropbox, or SkyDrive accounts, click or tap **Sign in**. Cloud GO! directs you to the Google Drive, Dropbox, or SkyDrive website to log in to your account.

Click or tap a specific icon to move, upload, rename, create folder, download, delete or refresh your cloud contents

Click or tap to open a cloud storage account

Tick to select contents

Click or tap to sign out

Click or tap to go back to the previous screen

Click or tap to synchronize cloud contents or to create a back up to your local drive

Click or tap to go back to Wi-Fi GO!/Remote GO! screen

The screenshot shows a mobile application interface for 'Cloud GO!'. At the top, there is a navigation bar with a 'Cloud GO!' logo and a 'Sign In' button. Below this is a toolbar with various icons for file management. The main area displays a list of files with checkboxes for selection. At the bottom, there are several buttons: 'Back', 'Home', 'Refresh', 'Sync', and 'Sign Out'. Red lines connect these elements to descriptive text callouts.

# Remote Desktop

Remote Desktop allows you to remotely control your desktop in real-time using your smart device.

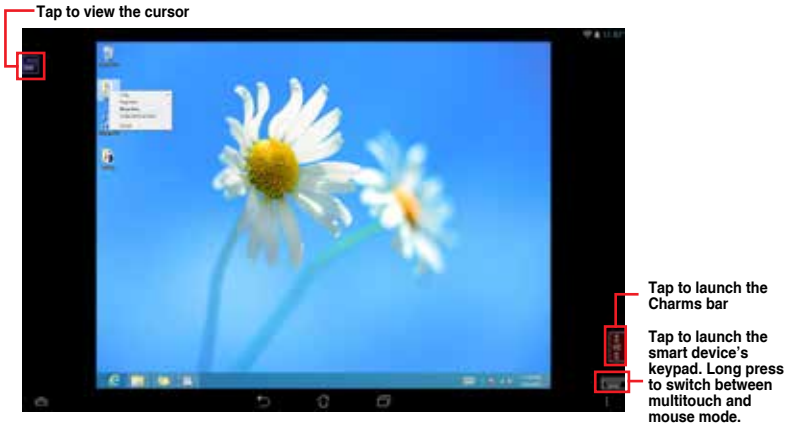


The System User Account Control (UAC) will be set to **Never Notify** when using Remote Desktop function. The UAC level will return to your previous settings after you exit Remote Desktop.

To use Remote Desktop:

On your smart device, tap **Remote Desktop**.

## Remote Desktop interface for Windows® 8



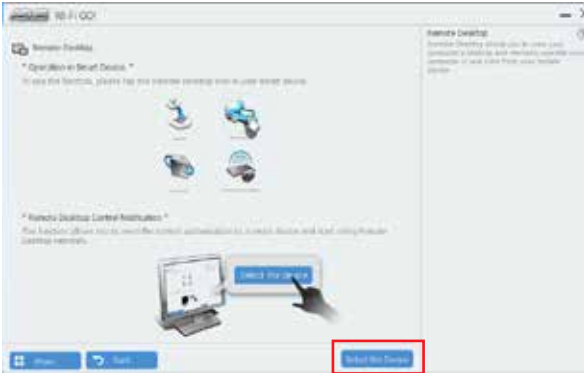
- Select multitouch mode to support Microsoft multitouch functions on Windows® 8 / 8.1.
- Select mouse mode to support zoom-in and normal mouse functions.
- The Extended Mode support varies with the VGA driver installed in your computer.

## Remote Desktop Control Notification

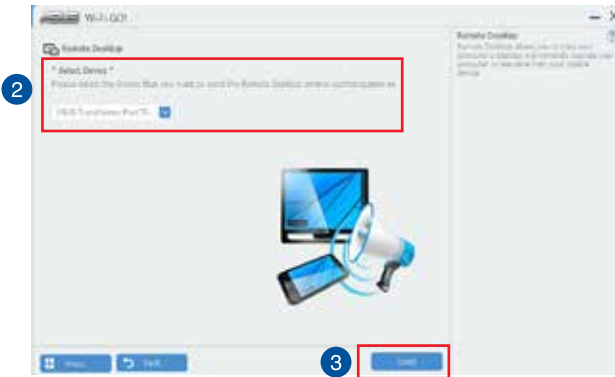
This function allows you to send the control authorization to a smart device and directly start using Remote Desktop in your device.

To use Remote Desktop Control Notification:

1. Click **Select Device**.



2. Select a device from the drop list.
3. Click **Send** to send the Remote Desktop control authorization to the selected device.



This function requires the **Push Notice** feature to be installed. You can get the PUSH Notice installer from the bundled support DVD or download the latest installer from [www.asus.com](http://www.asus.com).



## File Transfer

File Transfer allows you to sync and share files between your PCs and smart devices with just a click in public-to-private networks.

### Transferring files from computer to smart device

To transfer files from computer to smart device:

1. Click or tap **File Transfer** .
2. Click or tap **Setting** to select the destination for your transferred files.
3. Right-click the file then select **Send to > [Device Name]**.



4. After the file transfer is complete, click or tap **OK**.



- To receive files on your iOS device, go to **Settings > Privacy > Photos** then turn on the Wi-Fi GO! & NFC Remote.
- Find your transferred files from <SD Card>Wi-Fi GO! for Android devices and Camera roll for iOS devices.

### Transferring files from smart device to computer

To transfer files from smart device to computer:

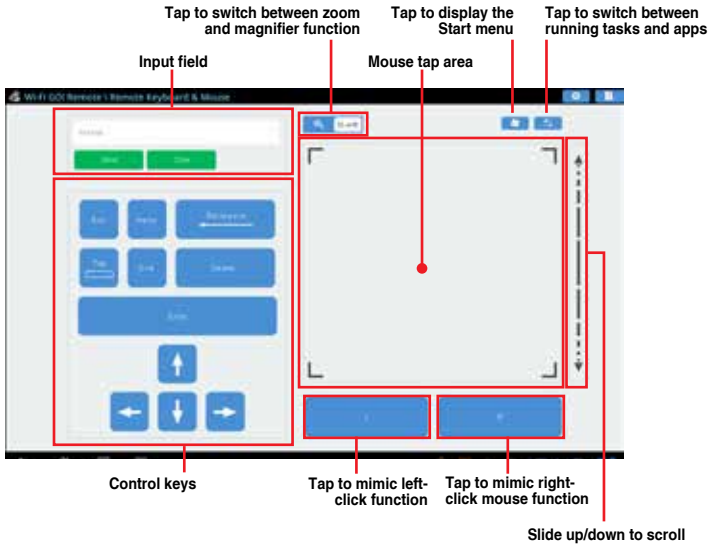
1. Tap **File Transfer > Enter**.
2. Tick the files that you want to send to your computer, then tap **Send**.



Find your transferred files from **X:\Users\Documents\ASUS HomeCloud\Wi-Fi GO!\File Transfer\** or click **Setting** to select a new storage location.

## Remote Keyboard & Mouse

Remote Keyboard & Mouse allows you to use your smart device's touch panel as a remote keyboard and mouse for your computer.



## ASUS Media Streamer

The ASUS Media Streamer allows you to enjoy your PC's multimedia content anywhere. You can pipe music from your PC or stream your favorite movie to a smart TV using your PC or smart device.



- Ensure to enable the DLNA setting of your devices first.
- ASUS Media Streamer supports NFC function. Some functions may require you to install NFC EXPRESS 2. Visit [www.asus.com](http://www.asus.com) for more information about NFC EXPRESS 2.



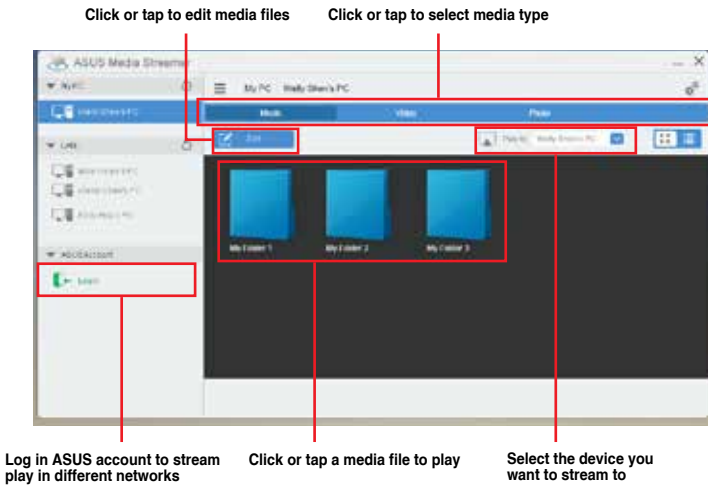
- The public-to-private network functions for the iOS system will be available from Media Streamer V2.00.00 or later versions.
- The iOS system only support photo and video streaming for Media Streamer.

## System requirements

System requirements	PC	Smart device
OS	Windows® 7/Windows® 8/ Windows® 8.1	Android 4.0 or higher versions iOS7 or later versions
Utilities	ASUS HomeCloud	ASUS Media Streamer

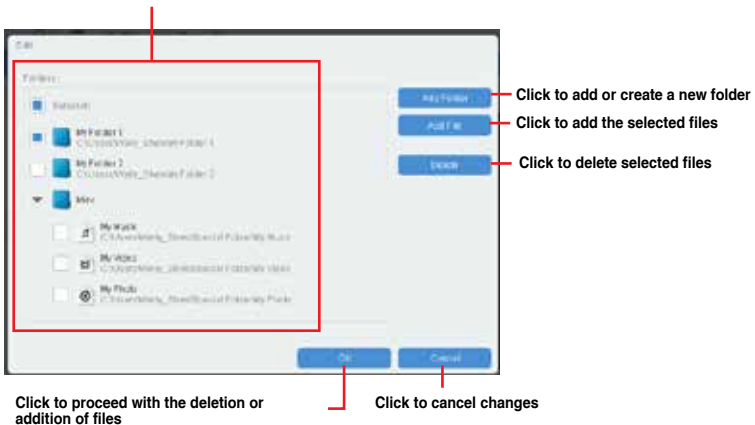
To use ASUS Media Streamer:

On your computer, click **ASUS HomeCloud** then select **Media Streamer** from the mini bar. On your device, click or tap **Media Streamer**.



## Adding and deleting media files

Drag and drop or tick files to add or delete.



The following media formats are supported by Android and iOS devices:

- **Android:** .3gp, .mp4, .m4a, .aac, .ts, .flac, .mp3, .mid, .xmf, .mxmf, .rttl, .rtx, .ota, .imy, .ogg, .mkv, .wav, .jpg, .gif, .png, .bmp, .webp, .webm
- **iOS Supports the following media formats:** .mov, .mp4, .mpv, .3gp.

# RF Equipment Notices

## CE: European Community Compliance Statement

The equipment complies with the RF Exposure Requirement 1999/519/EC, Council Recommendation of 12 July 1999 on the limitation of exposure of the general public to electromagnetic fields (0–300 GHz). This wireless device complies with the R&TTE Directive.

## Wireless Radio Use

This device is restricted to indoor use when operating in the 5.15 to 5.25 GHz frequency band.

## Exposure to Radio Frequency Energy

The radiated output power of the Wi-Fi technology is below the FCC radio frequency exposure limits. Nevertheless, it is advised to use the wireless equipment in such a manner that the potential for human contact during normal operation is minimized.

## FCC Bluetooth Wireless Compliance

The antenna used with this transmitter must not be colocated or operated in conjunction with any other antenna or transmitter subject to the conditions of the FCC Grant.

## Bluetooth Industry Canada Statement

This Class B device meets all requirements of the Canadian interference-causing equipment regulations.

Cet appareil numérique de la Class B respecte toutes les exigences du Règlement sur le matériel brouilleur du Canada.

## NCC: Taiwan Wireless Statement

### 無線設備的警告聲明

經型式認證合格之低功率射頻電機，非經許可，公司、商號或使用者均不得擅自變更射頻、加大功率或變更原設計之特性及功能。低功率射頻電機之使用不得影響飛航安全及干擾合法通信；經發現有干擾現象時，應立即停用，並改善至無干擾時方得繼續使用。前項合法通信指依電信法規定作業之無線通信。低功率射頻電機須忍受合法通信或工業、科學及醫療用電波輻射性電機設備之干擾。

於 5.25GHz 至 5.35GHz 區域內操作之  
無線設備的警告聲明  
工作頻率 5.250 ~ 5.350GHz 該頻段限於室內使用。

## Japan RF Equipment Statement

この製品は、周波数帯域5.15～5.35GHzで動作しているときは、屋内においてのみ使用可能です。

## KC (RF Equipment)

대한민국 규정 및 준수

방통위 고시에 따른 고지사항

해당 무선설비는 운용 중 전파혼신 가능성이 있음,

이 기기는 인명안전과 관련된 서비스에 사용할 수 없습니다.

